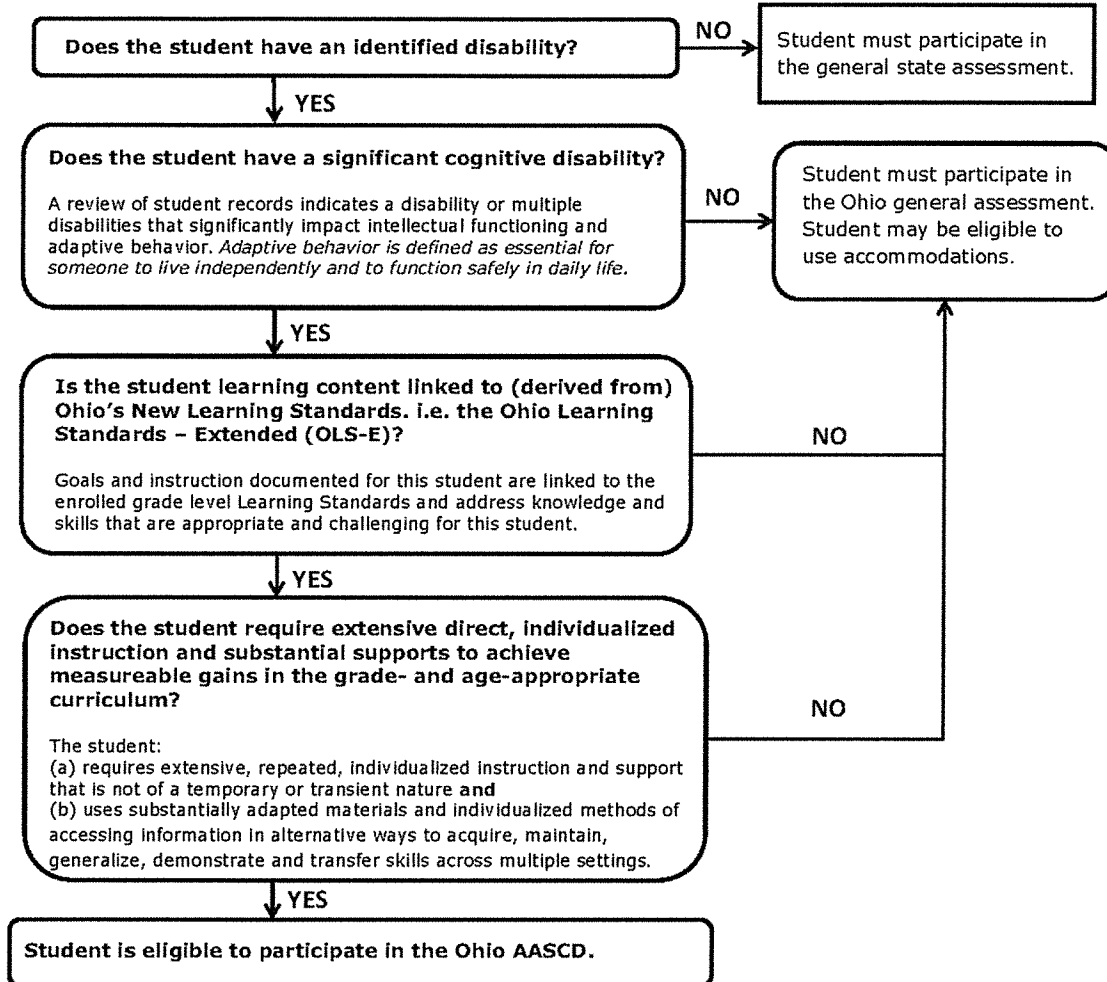


Ohio AASCD Decision Making Flow Chart

The student is eligible to participate in the Alternate Assessment for Students with Significant Cognitive Disabilities (AASCD) if all responses below are YES.



In addition, evidence for the decision for participating in the AASCD is **Not Based** on:

1. A disability category or label	8. English Language Learner (ELL) status
2. Poor attendance or extended absences	9. Low reading level/achievement level
3. Native language/social/cultural or economic difference	10. Anticipated disruptive behavior
4. Expected poor performance on the general education assessment	11. Impact of student scores on accountability system
5. Academic and other services student receives	12. Administrator decision
6. Educational environment or instructional setting	13. Anticipated emotional duress
7. Percent of time receiving special education	14. Need for accommodations (e.g., assistive technology/AAC) to participate in assessment process

August 25, 2014